

Your Community Connection

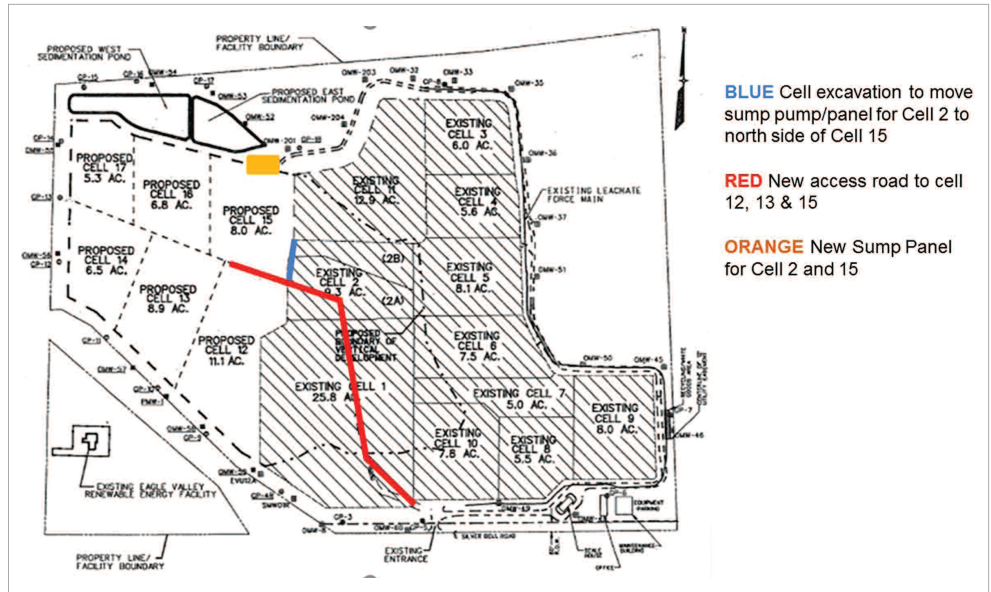
Vol. 2, 2018

News from Waste Management's Eagle Valley Recycle and Disposal Facility (RDF)

Eagle Valley Site Operations

If you've driven by Waste Management's Eagle Valley Recycle and Disposal Facility this spring and summer, no doubt you've seen a lot of activity taking place at the site.

Waste Management is busy this season constructing Cell 15. WM will be connecting the existing liner systems in cells 2, 11 and 12 to the liner of Cell 15 to form a continuous liner system. Then in late winter/early spring waste will be excavated to expose the existing Cell 2 leachate sump (leachate is the rain and snow melt that filters through the waste to be collected by the sump pump), and modify the drainage system to allow Cell 2 to drain by gravity to a new Cell 2 sump location being constructed at the northeast corner of Cell 15. The Cell 2 sump is being moved to a perimeter location so the pumps are easily accessible for maintenance and monitoring. Waste Management will be performing this work in the colder months to reduce the potential for nuisance odors during waste



BLUE Cell excavation to move sump pump/panel for Cell 2 to north side of Cell 15

RED New access road to cell 12, 13 & 15

ORANGE New Sump Panel for Cell 2 and 15

excavation. The monitoring panel for Cell 2 and Cell 15 leachate will both be located on the northeast side of Cell 15 for ease in access and maintenance.



Cell 15, looking to the northwest



New Cell 15, facing east

Eagle Valley Recycling and Disposal Facility

600 W. Silver Bell Road
Orion, MI 48359

Telephone
248-391-0990
Fax
248-391-1219

Please call for current hours of operation as hours may change seasonally.
Monday - Friday 7 a.m. - 4 p.m.; Saturday 8 a.m. - 11:30 a.m.

Recycling Hours

Recycling drop-off available during normal landfill hours.

For tours call (248) 391-0990.

LANDFILL CONCERNS HOTLINE

1-877-360-8582

WM CUSTOMER SERVICE

1-866-797-9018

Please keep these numbers handy.



<http://eaglevalleylandfill.wm.com>



Printed on recycled-content paper.

THINK GREEN®

War on Recycling Contamination

As the number of people who recycle grows, contamination has also grown, and subsequently the costs to process and remove the contaminants. One out of every four items in a recycling bin doesn't belong, that's 25 percent contamination in the recycle stream. New, more stringent requirements imposed by the end use processors of U.S. recyclables requires collectors of recyclables (like Waste Management) to reduce contamination in the recycle stream we deliver to them. As a result, Waste Management has been waging a "war on recycling contamination". How do you fight that war? By managing operational expenses and EDUCATION, EDUCATION, EDUCATION!

For the last several years Waste Management has been hard at work developing educational programs about contamination in the recycle stream, improving operations at our material recovery facilities (MRFs), and developed alternative markets outside of China for the recyclables we collect. However, these new, more stringent standards set by the countries that receive U.S. recyclables requires a new phase in this campaign. To combat this increase in contamination, Waste Management frontline employees across

the country are being engaged in this effort. They will be instrumental in educating our customers at the container level. Frontline drivers will report contamination when they see it occurring in the customers' collection bins. Waste Management is also addressing the concern by sending e-blasts with recycling guidelines to our subscription customers and focusing on educating municipal governments about their own education efforts to their community members.

Contamination in the recycle stream delivered to third party, non-WM owned/operated Material Recovery Facilities (MRFs)/recycling centers, has led to MRFs imposing fees for contamination. Educating the customer that their behavior is impacting the recycle stream is key, and passing any associated contamination costs through to the customer helps encourage necessary behavior changes. You can read more about the current dynamics in the recycling industry, by clicking on this link <http://mediaroom.wm.com/the-battle-against-recycling-contamination-is-everyones-battle/> *cont'd below*



Eagle Valley Recycling and Disposal Facility
600 W. Silver Bell Road
Orion, MI 48359

THINK GREEN®
wm.com

War on Recycling Contamination, *cont'd from above*

Below is an image of the Green News notices that WM will be e-mailing to subscription and HOA customers in Orion. The print size in future e-notifications will be enlarged so it is easier to read. The print size here is small due to limitations of this newsletter layout. Always remember to

recycle often but recycle right <https://recycleoftenrecycleright.com/> . You can follow WM's SE Michigan local Facebook page at <https://www.facebook.com/kathleen.klein.9400> and Twitter page at <https://twitter.com/kathyklein4>.

Green News

The World of Recycling is Changing



Recycling is at risk. And we need your help. We collect hundreds of tons of recycling material every day in communities. Unfortunately, a higher percentage of non-recyclable materials are being found in the recycling. That often happens by mistake or due to lack of information. Current recycling markets are requiring clean, quality materials with virtually no contamination. With proper education and decision making, we can make a difference and ensure recycling is sustainable for generations to come.

Some of the most common contaminates that are found in the recycling stream include:

- **Plastic bags**, which often may be returned to retailers, are NOT accepted in single stream recycling.
- **Pizza boxes**, which contain residual grease, cheese or other toppings. Don't include food-soiled items and liquids – they can turn an entire load of recycling into trash.
- **Bubble wrap and shrink wrap** cause damage, down-time and costly repairs to recycling equipment.
- **Electrical cords, string/rope material, rubber and plastic hose, clothing.** These items are called "tanglers" and can shut down an entire recycling plant!
- **Propane tanks, batteries and electronic waste** can start fires at the recycling plant.
- **Medical equipment and devices** of any kind, such as needles, tubing and gloves. They can cause injury to workers.